



# Florentine Protection Society

Patron: Steve Biddulph

19 April 2010

Vanessa Goodwin, MLC  
Parliament House  
Hobart, 7000

Dear Ms Goodwin,

Thank you very much for recently making some time available to meet with us to discuss the protection of the Upper Florentine valley.

As we mentioned at that meeting we are seeking your support, as a Member of the Legislative Council, for policies and programs which would halt the logging of the old growth forest and provide permanent protection for the area. The Florentine Protection Society's policy is as follows:

*"The Florentine Protection Society proposes that the Upper Florentine be added to the Tasmanian Wilderness World Heritage Area and to the Southwest National Park.*

*"The Florentine Protection Society adopts in principle the boundary of the Upper Florentine as shown in "Western Tasmania: A Place of Outstanding Universal Value" by Geoff Law (2009) page 4, which would combine the Tasmanian Wilderness World Heritage Area and Mt Field National Park as one protected entity.*

*"The Florentine Protection Society therefore calls on the State Government to extend the Southwest National Park to incorporate the Upper Florentine and to support World Heritage nomination of the Upper Florentine.*

*"The Florentine Protection Society also calls on the Federal Government to nominate the Upper Florentine as an extension to the Tasmanian Wilderness World Heritage Area."*

Further information is available from the Florentine Protection Society website:  
<http://florentine.org.au/>

At the meeting, you asked us the size of the area that we are seeking protection for and we promised to get back to you on this. I am enclosing a photocopy of the map we showed you at our meeting, with the boundary of the Upper Florentine outlined. That area is 7,787 hectares.

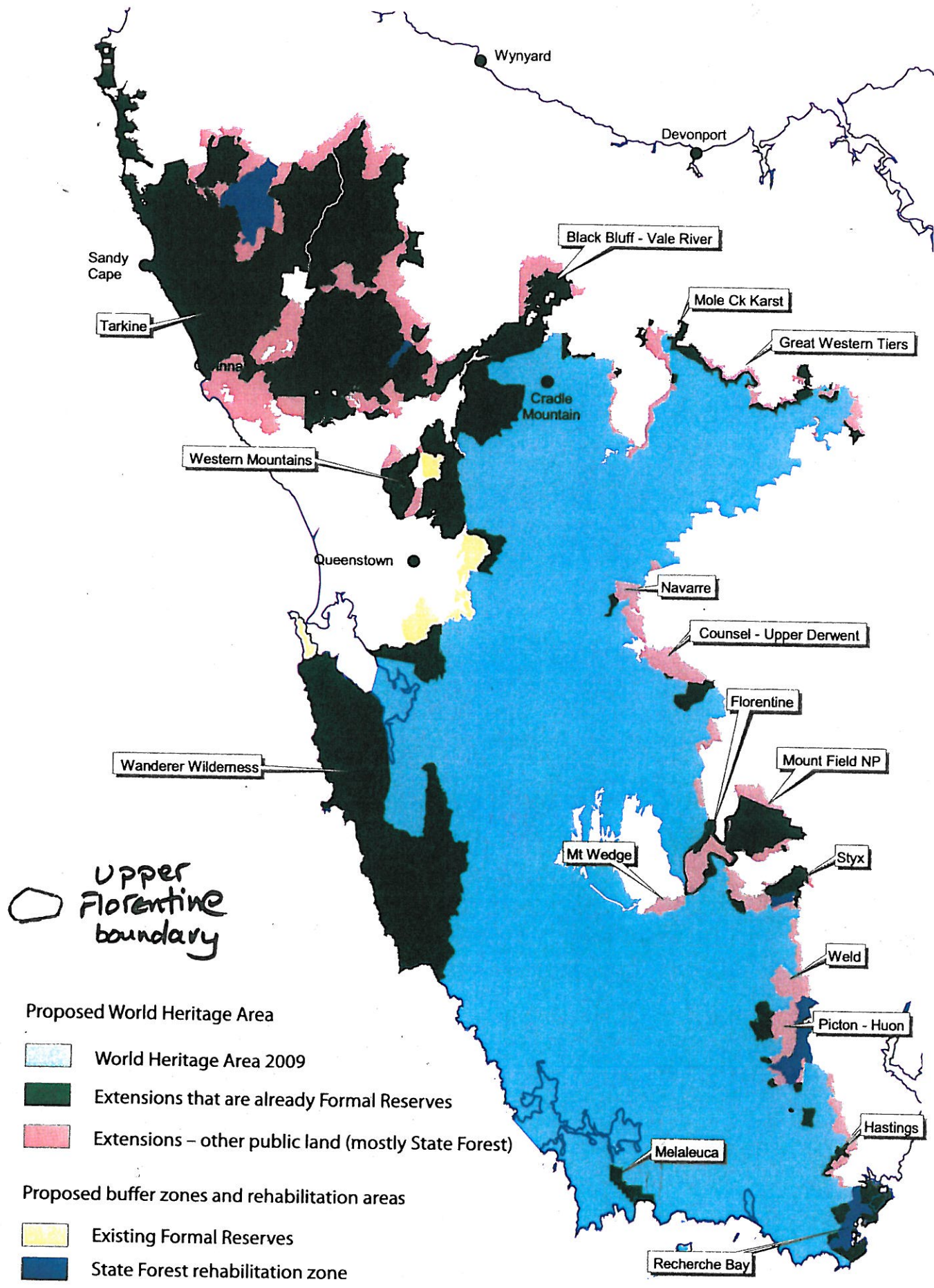
As we discussed at our meeting, the Upper Florentine is surrounded on three sides by the Tasmanian Wilderness World Heritage Area and on the east by the Mt Field National Park. We are seeking National Park and World Heritage status for the Upper Florentine in order to protect the recognised high conservation value old growth forest and other World Heritage values.

Thank you again for taking the trouble to meet with us. We appreciate your interest in the Upper Florentine.

Yours sincerely,

*Gil Pixley*      *Angela McGowan*

Gil Pixley and Angela McGowan  
on behalf of The Florentine Protection Society Inc.



Proposed extensions to the Tasmanian Wilderness World Heritage Area.